

# PLANT DISEASE REPORT

Sara May, Plant Disease Clinic

Sample: Palm 'Maya Palm'  
(*Chamaedorea hooperiana*)

Sample Location: Philadelphia Co. PA

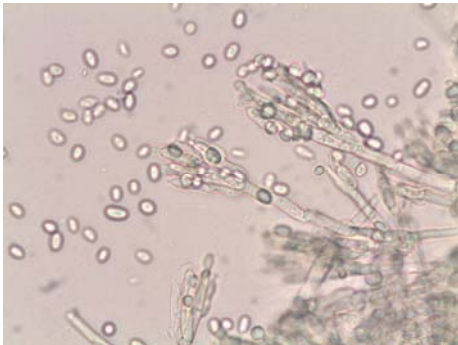


## Pink Rot on Palm



**Disease description:** This sample came from an interiorscape in the Philadelphia area. The fungus that causes pink rot on palm was first known as *Penicillium vermoesonii* and was renamed *Gliocladium vermoesonii* in 1930. In 2005 it was renamed again as *Nalanthamala vermoesonii*. This disease is still sometimes referred to as “Gliocladium blight”.

Symptoms appear as yellowing of basal fronds and black stem lesions with a gummy exudate. Masses of pink-orange conidia can often be found covering the necrotic tissue. This disease often occurs on plants that are weak or under stress. The organism will invade wounds especially those made by tearing off leaves. It is often a problem on interiorscape palms where there is little air movement.



**Morphology:** The hyphae, conidiophores and phialides of *N. vermoesonii* look very similar to *Penicillium*. The phialides are flask-shaped and the one-celled conidia are ovoid to cylindrical. The conidia are formed in linear chains by the conidiophores.



**Control:** Fungicides can be effective to protect the plant after removing diseased leaves. One of the best controls is to prevent wounding by cutting instead of tearing off leaves that need to be removed. Cut leaves slightly above the point of attachment. The remaining portion of the leaf will brown and fall off naturally. This method prevents wounding, which could allow the fungus to enter the plant.

*N. vermoesonii* conidiophores, phialides and conidia.

